



Education and Training

# School Movement Survey

August 2007

This publication provides information on the reasons given by parents and carers for moving their child from an ACT public school between February 2007 and August 2007.

## Key Findings

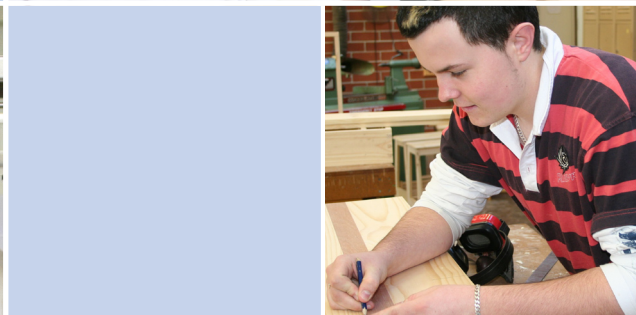
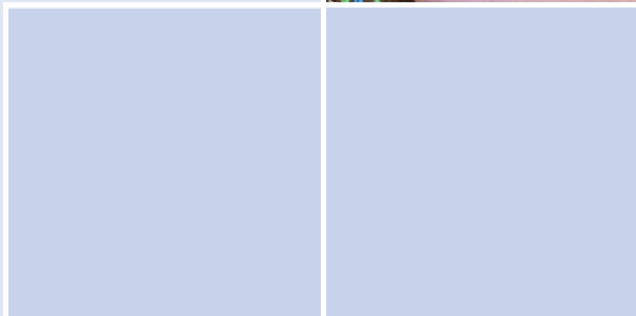
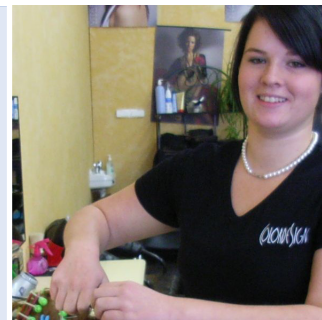
Of those students who moved from an ACT public school 36% moved to another ACT or NSW public school and 22% moved to an ACT or NSW non-government school.

There was a range of factors that led to a student moving from an ACT public school. The most common factors were peer relationships (34%), school culture (31%) and quality of education (29%)\*.

Where a child remained within the ACT public education system the decision to move schools was based on peer relationships (50%), school culture (35%) and the physical location of the school (32%)\*.

Where a child remained within the ACT public education system the selection of the new school was based on the reputation of the school (63%), the location of the school (61%) and quality of education (59%)\*.

\*Respondents could provide multiple reasons so totals may add to more than 100%.



# Introduction

In order to collect detailed information about parental school choice the Department of Education and Training conducts a biannual School Movement Survey between each school census in February and August. This report provides information on the reasons given by parents and carers for moving their child from an ACT public school between February 2007 and August 2007.

A pilot School Movement Survey was conducted throughout June and July 2007 and covered students who left an ACT public school in 2006. The key results from this survey are available via a short publication on the Department's website (<http://www.det.act.gov.au/publicat/pdf/SchoolMovementSurvey2007.pdf>).

Based on the review of the pilot survey a number of changes have been made to this survey's methodology. These changes were related to survey questions and design, scope, timeframe and collection method. As such, it is not possible to make a valid comparison of data across the two surveys.

This survey was conducted using a Computer Assisted Telephone Interviewing Methodology. The scope of the survey was parents and carers of students who left an ACT public school between the February 2007 and August 2007 school censuses. This excluded parents of students exiting special schools and/or closing schools, those who completed their year 12 requirements, short-term enrolments and students who had experienced a traumatic event.

Of the 949 parents and carers selected, 593 were in-scope and of these 322 family questionnaires were completed, representing a response rate of 54%. Of the 322 completed family questionnaires, a total of 341 student records were considered to be in-scope and useable.

## Findings

### Destination of students leaving a public school

Just over one in three respondents (36%) who moved their child from an ACT public school between February 2007 and August 2007 stayed in the public education sector (in ACT or NSW), 22% went to the non-government education sector (in ACT or NSW), 30% were no longer enrolled in a school or college, 1% were home schooled and 10% were 'other' which includes school/college enrolment in other Australian states and territories or international/overseas schools (Table 1).

**Table 1: Destination of students after moving from an ACT public school, February-August 2007**

Destination	Number	Percent
ACT public school/college	104	30%
NSW public school/college	20	6%
<i>Total ACT/NSW public school/college</i>	<i>124</i>	<i>36%</i>
ACT non-government school/college	72	21%
NSW non-government school/college	5	1%
<i>Total ACT/NSW non-government school/college</i>	<i>77</i>	<i>22%</i>
Other school in Australia	28	8%
School overseas	7	2%
<i>Total other school in Australia or overseas</i>	<i>35</i>	<i>10%</i>
Home schooled	2	1%
Not enrolled at any school/college	103	30%
<b>Total</b>	<b>341</b>	<b>100%</b>

## Reasons for moving from an ACT public school

The most common reasons identified by parents for moving their child from an ACT public school are provided in Table 2. The main factors were peer relationships (34%), school culture (31%) and quality of education (29%).

**Table 2: Reasons for moving from an ACT public school, February-August 2007**

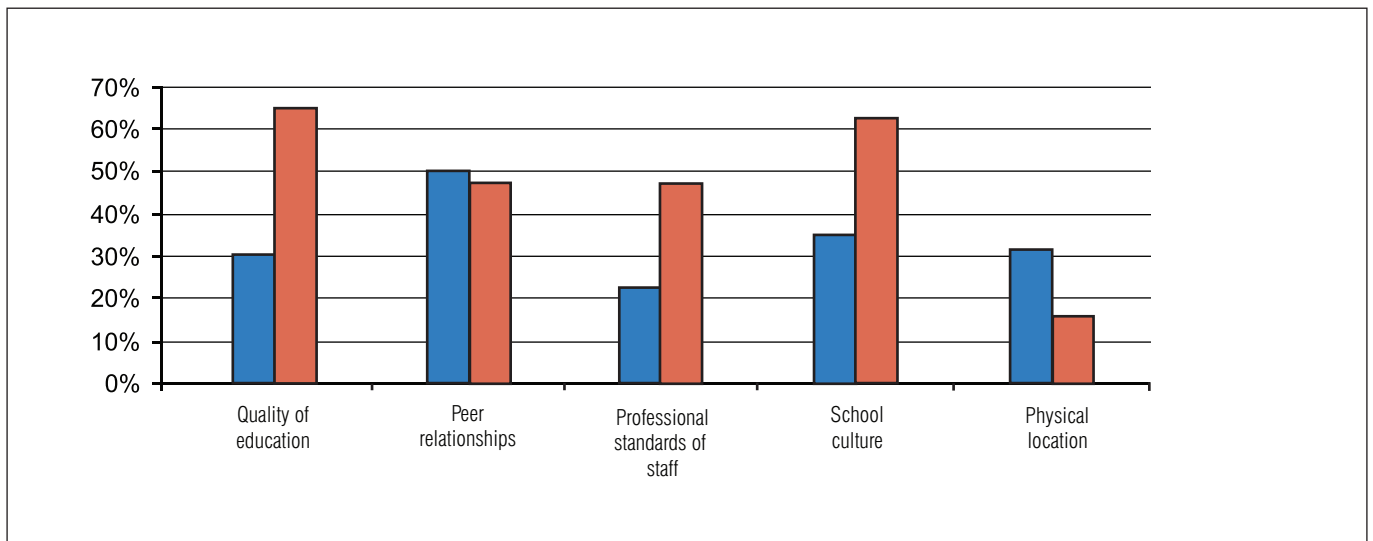
Response categories	Number	Percent
Quality of education	98	29%
Peer relationships	115	34%
Professional standards of staff	70	21%
School culture	105	31%
Physical location	88	26%
School facilities	37	11%
Employment related	68	20%
Perception of public education	13	4%
Vacancy available at school of choice	38	11%
Other (includes personal reasons, student choice and asked to leave)	32	9%

Note: The percentages do not add to 100%, as respondents could provide more than one response.

Figure 1 shows the most common reasons given by parents for moving their child from an ACT public school. For children transferring to another ACT public school, the most common reason for moving were peer relationships (50%), school culture (35%), physical location (32%) and quality of education (30%).

Where a child moved to an ACT non-government school the most common reasons given for moving were related to quality of education (65%), school culture (63%), peer relationships (47%) and professional standards of staff (46%).

**Figure 1: Most common reasons for moving from an ACT public school by destination, February-August 2007**



■ ACT public schools      ■ ACT non-government schools

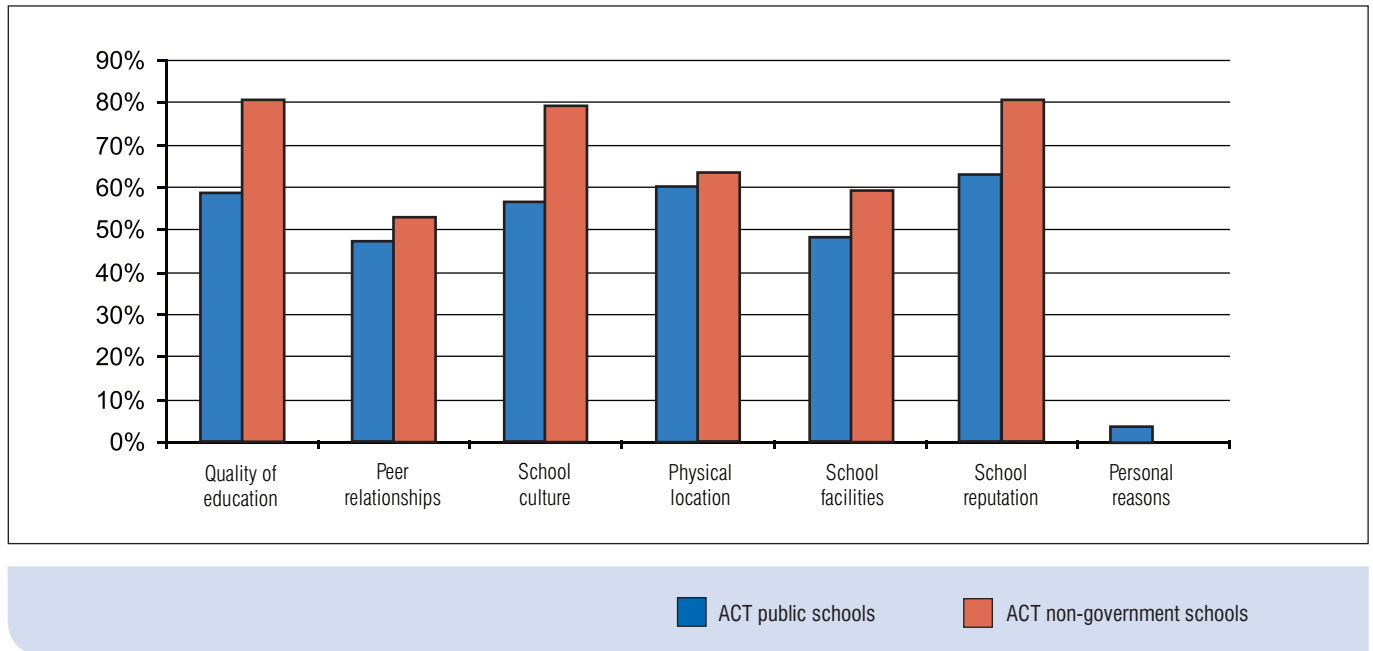
Note: The percentages in the figure above do not add to 100%, as respondents could provide more than one response.

## Reasons for selection of new school

Figure 2 details the reasons parents/carers gave in choosing a new school for their child. Where a child remained within the ACT public education system, the choice of their new school was based on issues related to the reputation of the school (63%), the location of the school (61%), quality of education (59%), school culture (57%), school facilities (48%), peer relationships (47%) and personal reasons (4%).

Where a child moved to an ACT non-government school the choice of their new school was based on issues related to the reputation of the school (81%), quality of education (81%), school culture (79%), the location of the school (64%), school facilities (60%) and peer relationships (53%).

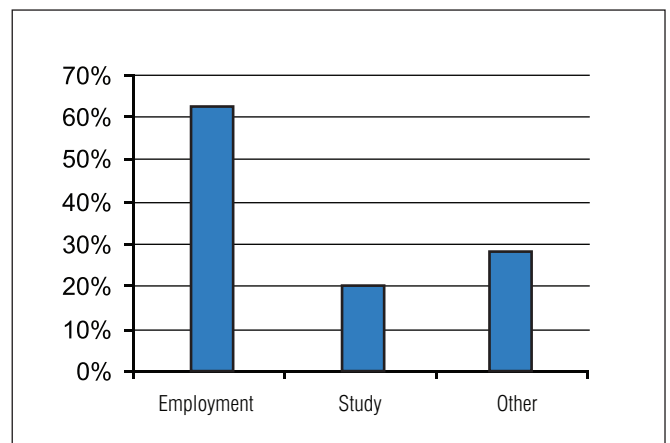
**Figure 2: Reasons for selecting new school by destination, February-August 2007**



## Destination of early school leavers

About a third (30%) of the students surveyed were no longer attending school and most of these students (82%) were from the college sector. Of these, over half (62%) were engaged in some form of employment at the time of the survey and 19% were studying outside the traditional school environment (Figure 3).

**Figure 3: Destination of early school leavers, February-August 2007**



*Note: The percentages in figures 2 and 3 do not add to 100% as respondents could provide more than one response.*

© ACT Government, 2008

This publication has been produced by the ACT Department of Education and Training. Apart from any use permitted under the Copyright Act 1968, no part of this publication may be reproduced by any process without written permission. Requests should be made to the Department.

The views and opinions expressed in this document are those of the ACT Department of Education and Training and do not necessarily reflect the views of the ACT Government.

Comments and suggestions regarding this publication are welcomed and should be forwarded to the Department.

Published by ACT Department of Education and Training

GPO Box 158  
Canberra ACT 2601

Phone: (02) 6205 9358  
Fax: (02) 6205 8353

Web: <http://www.det.act.gov.au>  
Email: [assessment.reporting@act.gov.au](mailto:assessment.reporting@act.gov.au)